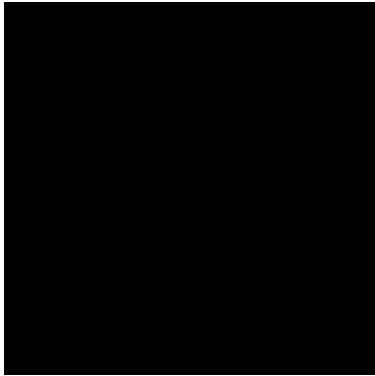


Bloomington Aqua
Fall 2019/2020 Collection
"Earthing"
Created by: Gabriela Casella

Gabriela Casella
Earthlings- Color Palette
Bloomingdales Aqua F/W 2019/2020

Nightshade



Midnight Blue



Muted Sky



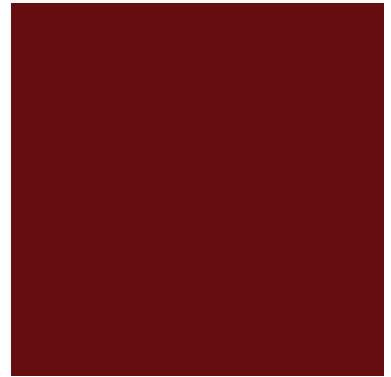
Greenery



Olive



Cranberry



Rust



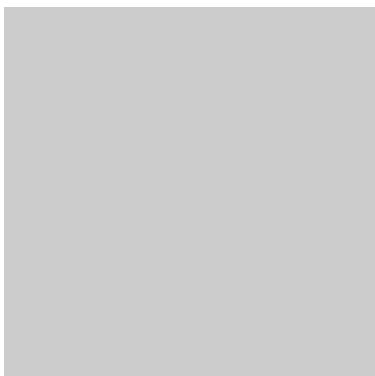
Tangerine



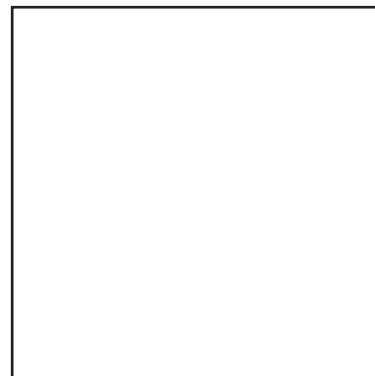
Clementine



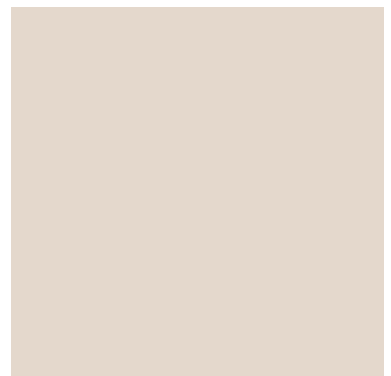
Overcast



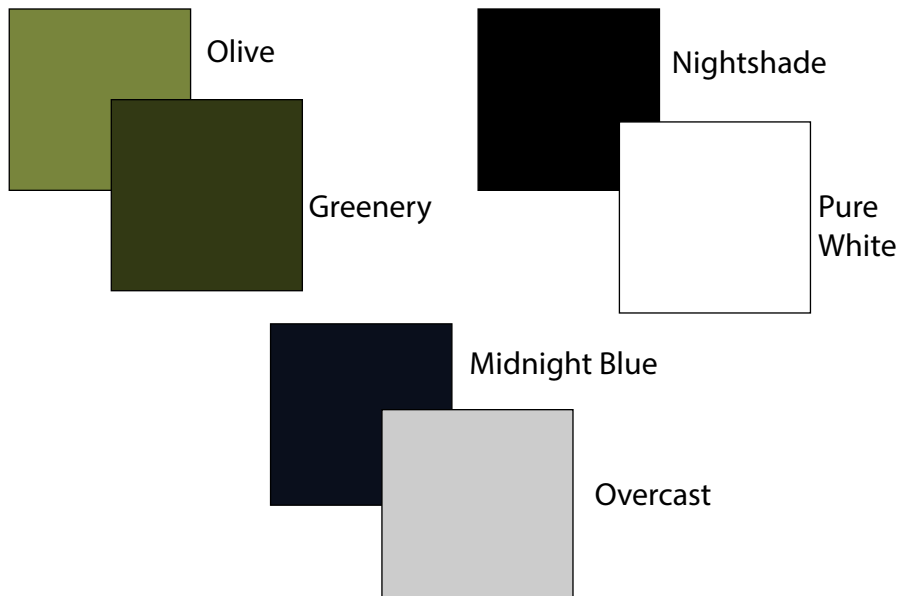
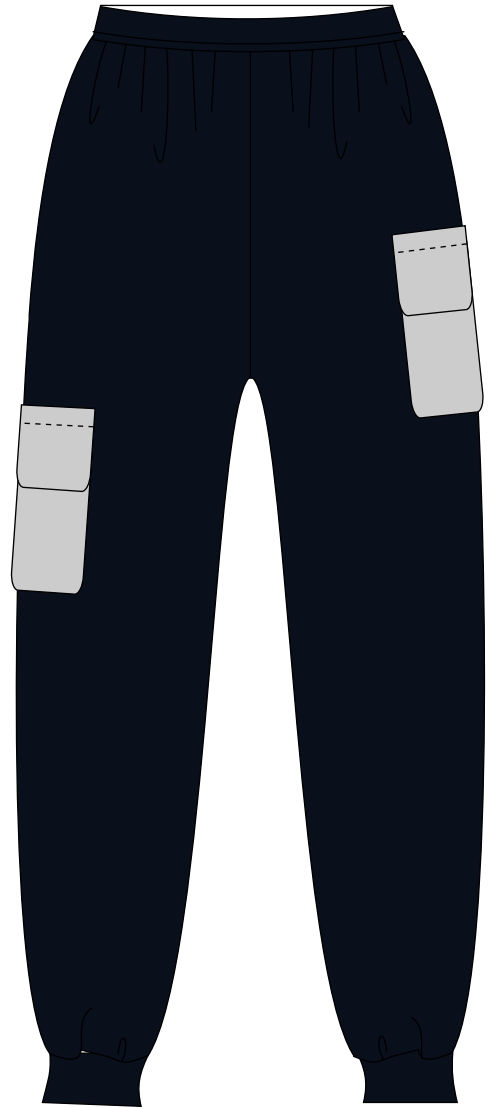
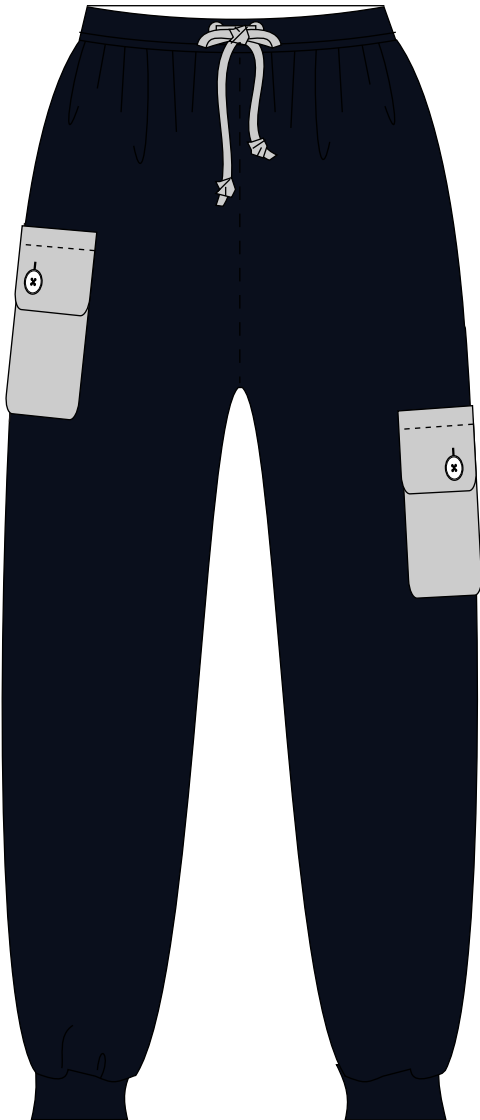
White



Cloud



Bloomingdales Aqua
Style #1001- Jogger Pants with Cargo Pockets
Fabric Construction: Knit Jersey
Fiber Content: 90% Polyester/10% Spandex
KEY ITEM



Fashion Snoops
F/W 19/20 Seasonal Narrative Core Must Haves

Gabriela Casella
Style #1002- 1/2 sleeve mock neck top
Fabric Construction: Rib Knit
Fiber: 100% Cashmere
KEY ITEM



Theory Mock Neck
from Saks Fifth Avenue



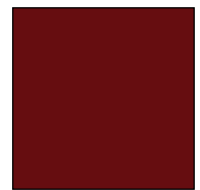
WGSN
Women's & Young Women's Forecast
A/W 19/20- Purpose Full



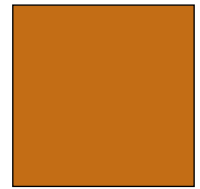
Nightshade



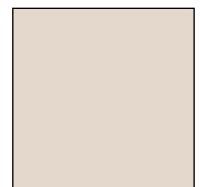
Greenery



Cranberry



Clementine



Cloud

Aqua Bloomingdales
Style #1003- Cropped Cashmere Hoodie with Slit
Fabric Construction: Knit Jaquard
Fiber: 100% Cashmere



Doneger F/W19
Womens Forecast
Designer- Andrea Jiapei Li



Olive
Greenery
Cloud
Nightshade

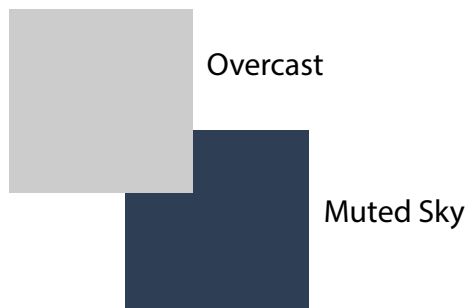
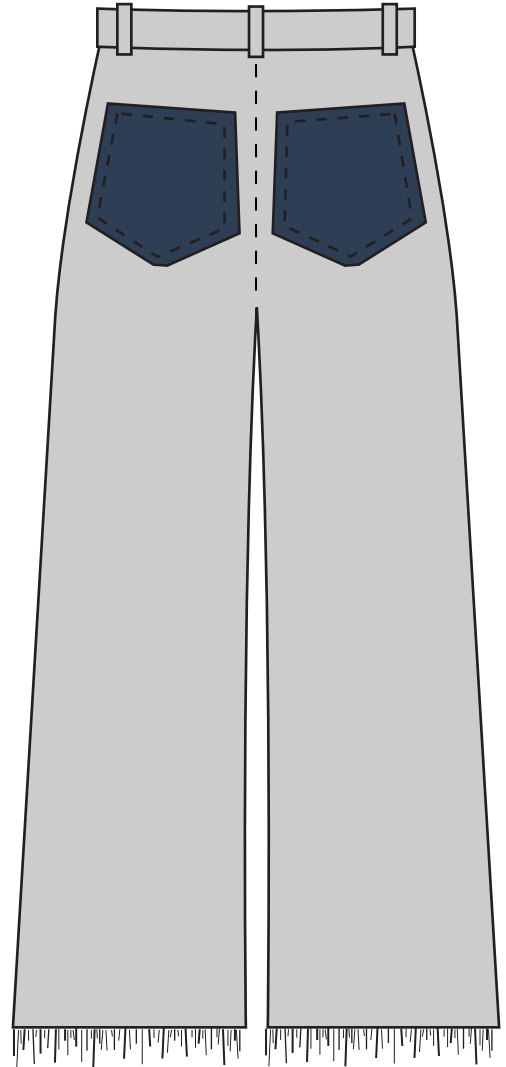
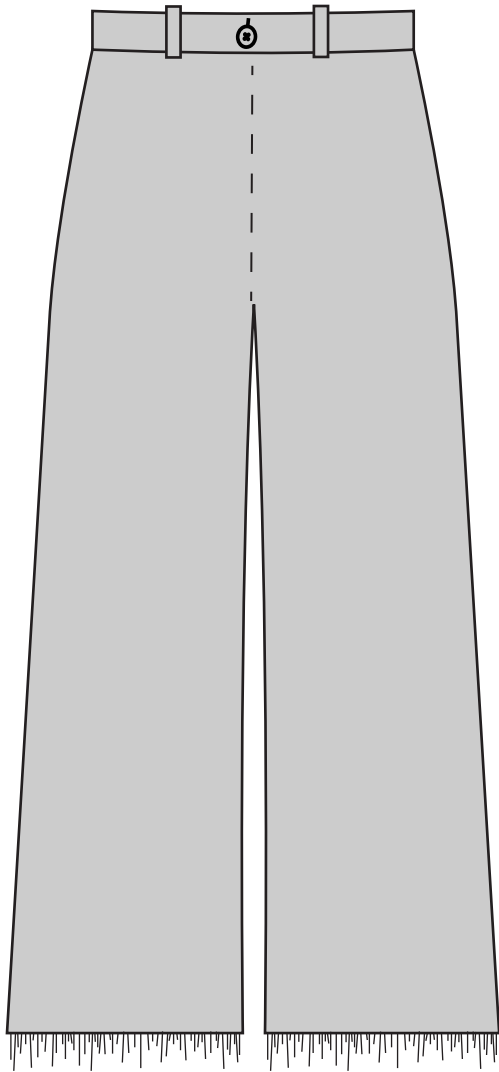


Muted Sky
Midnight Blue
Pure White
Nightshade

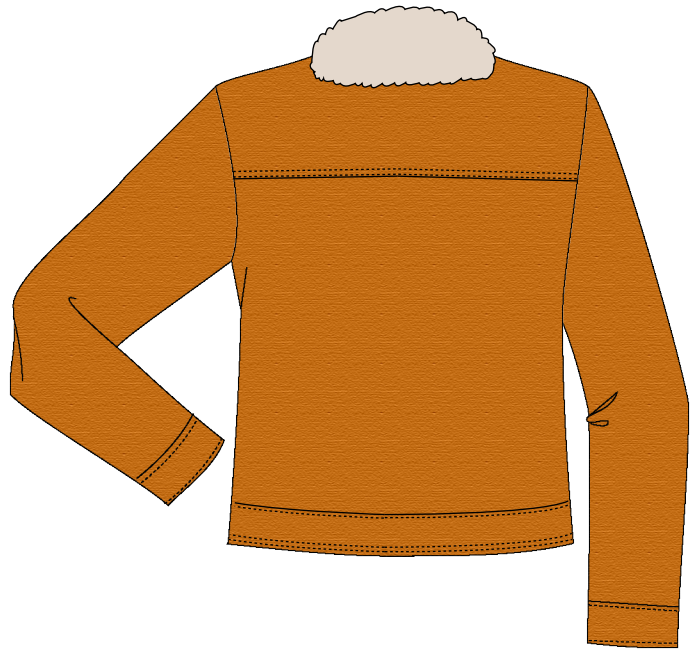


Clementine
Tangerine
Rust
Overcast

Bloomingdales Aqua
Style #1004- Wide Leg Denim with Contrasting Pockets and Frayed Hem
Fabric Construction: Denim Woven
Fiber: 75% Cotton/ Polyester / 5% Spandex



Bloomingdales Aqua
Style #1005- Shearling & Denim Trucker Jacket
Fabric Construction: Denim Woven & Faux Shearling
Fiber Content: Shell- 100% Cotton
Trim/Lining 73% polyester, 16% acrylic, 11% viscose



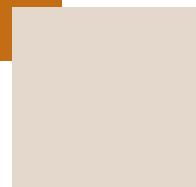
Muted Sky



Pure White



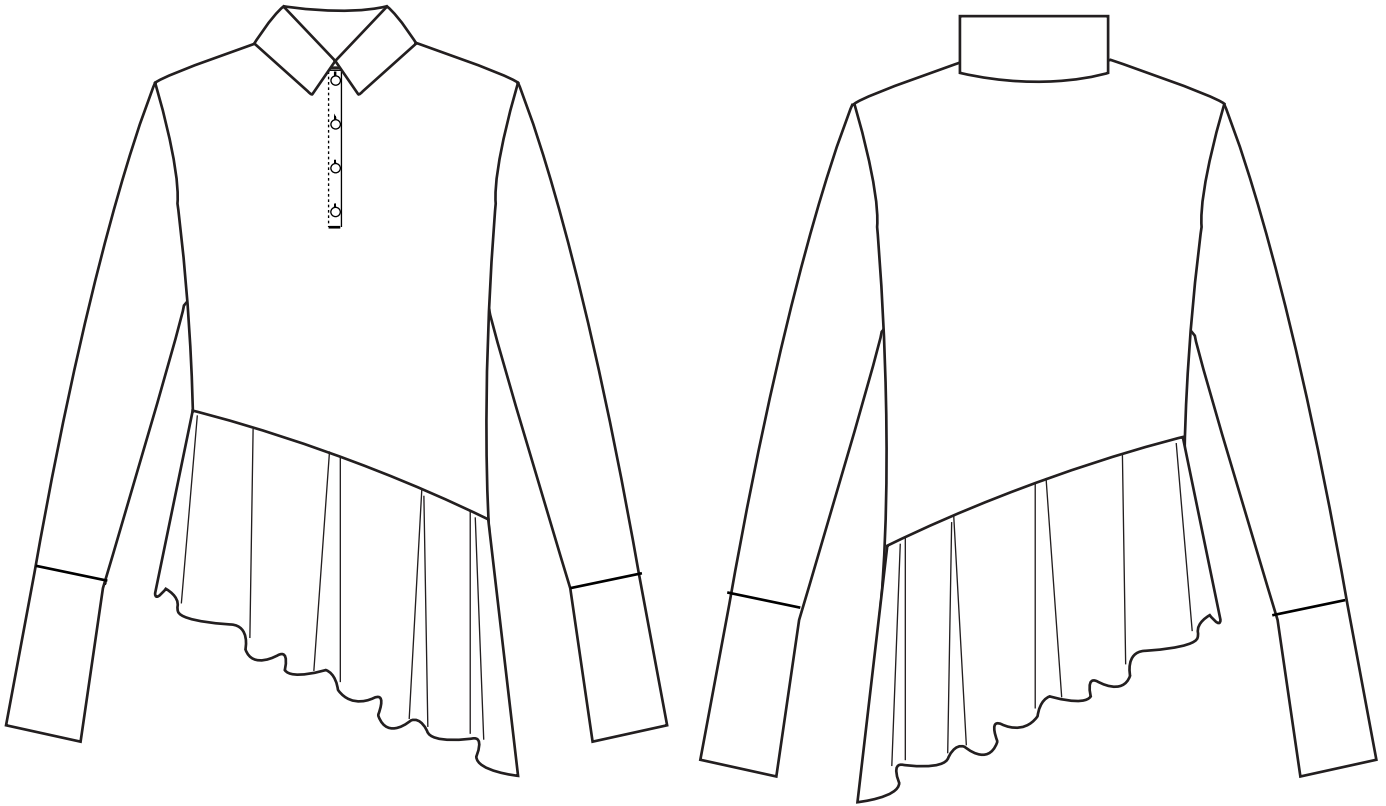
Clementine



Cloud

WGSN
Women's & Young Women's Forecast
A/W 19/20: Purpose Full
"Evolved Trucker"

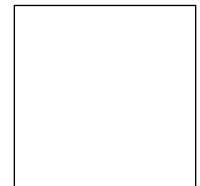
Bloomingdales Aqua
Style #1006- Asymmetric Ruffle Button Down
Fabric Construction: Woven
Fiber: 50% Cotton 50% Polyester



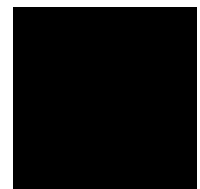
Adeam | New York (FW 18/19) 6 of 20



Cranberry



Pure White



Nightshade

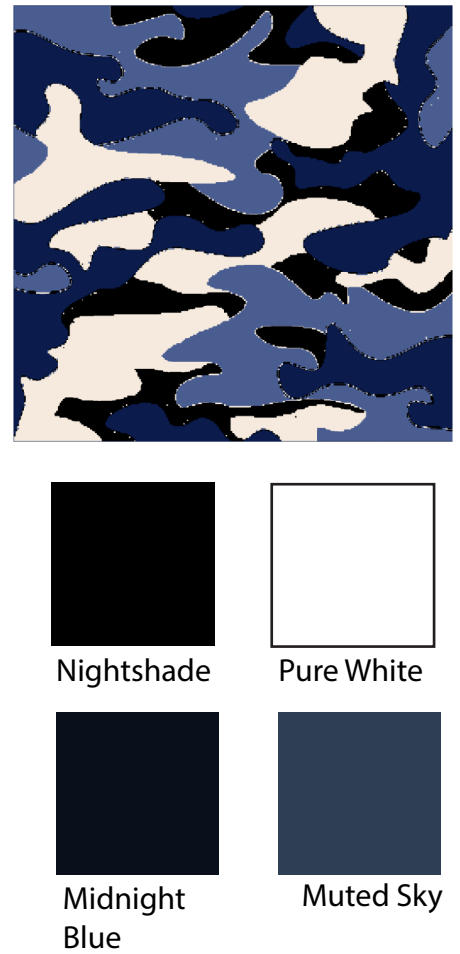
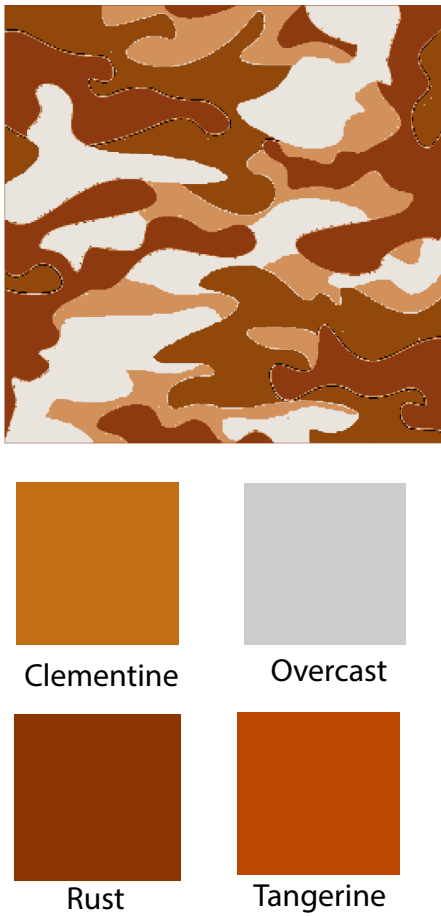
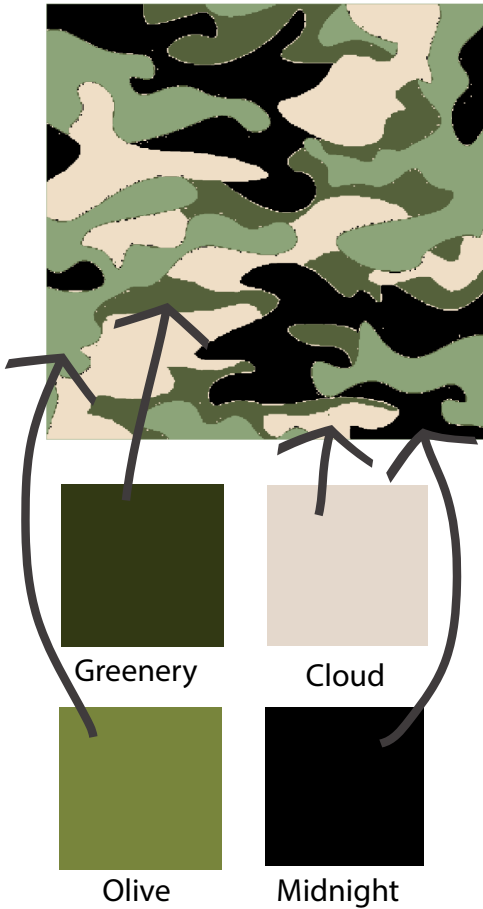
Fashion Snoops
Key Items F/W 19/20
Brand- Adeam FW 18/19

Matches Fashion
Palmer//Harding
Asymmetric ruffled-hem cotton shirt

AQUA Bloomingdales, Women, Fall 2019/2020

Design #1001, For Garment Style #1003- Women's Cropped Hoodie

Pattern: Jacquard Knit
Fabric: 100% Cashmere



100% cotton
S
Style #1006
RA: #7635

Made in China
Dry Clean Only

CARE TAG

AQUA

100% Exclusive

TICKET FRONT

Style #
Color
Style Name
Fabric

\$68.90

TICKET BACK



MAIN TAG

AQUA

S

100% COTTON
MADE IN THE U.S.A